



P. O. Box 295, Midvale, UT 84047-2950

Summer 2013

Upcoming Events and Announcements

Club Meetings

Location: Sandy Senior Center
9310 So. 1300 East, Sandy
First and third Thursdays of each month @ 6:30 pm
Club Website: www.utahphilatelic.org

Club Officers

President: Steve Baldrige
Vice-President: John Alleman
Secretary/Treasurer: Ed Blaney
Board Members: Virginia Lee, Sandi Locke,
George Cobabe, Judy Maxfield
Newsletter Editor: Jack Paradise

Upcoming Non-Event

Thursday, July 4 NO MEETING (See Page 2.)

Next UPS Stamp Show

October 18 and 19, 2013

The show will be at the Sons of the Utah Pioneers building at 3301 East Louise Avenue (2920 South)

INSIDE THIS ISSUE

1	The President's Corner – Steve Baldrige
2	The President's Corner continued Condition, Condition, Condition - Grade, Grade, Grade
3	Grade, Grade Grade (Centering, Centering, Centering)
4	Condition Factors that Reduce the Value of a Stamp

The President's Corner Steve Baldrige

Wow—we're halfway through the year, enjoying the summer and the Utah Philatelic Society is going strong. We just finished a stamp show a few weeks ago, and although I wasn't present and can't offer a first-hand assessment, it seemed to go fine and the dealers aren't threatening to boycott the next show.

There is room for improvement, however. Club members need to STEP UP and help out in several areas: We need to show up Thursday night at the SUP building to help set up tables; we need help volunteering on the registration table and, most importantly, we need people on Saturday afternoon who can help take the tables down, move them back into storage, and help vacuum the floor when the show is complete. The club is responsible for this—not the dealers, and not the SUP. Since moving to this location these jobs have been handled by just a few people, and it isn't fair to push the work load onto them at every show. Please, people, remember that we are a volunteer organization, and we operate best when everyone participates. Once again, we are indebted to Judy Maxfield and her granddaughter for preparing and serving the food on both days. Virginia Lee and Sandy Locke have both helped to breathe new life into the club by organizing a Youth Corner at all recent shows, which has attracted considerable attention.

continued on Page 2

The President's Corner *continued*

This show wasn't the only club activity that weekend; at the invitation of Craig Edwards, we also hosted a table at the Scout-o-Rama, as we have done in years past. Thanks to Don Marr, Ed Blaney and Devon Hawkes for manning the table.

Members are aware that when we moved the show venue to the SUP late last year, we needed to purchase tables. Michael Poe was instrumental in this, buying the tables himself and then allowing the club to pay him back over time. Thanks to an auction held in April, where members bid on donated items, we cleared over \$700 that went straight to the table debt. Members such as Dil Strasser, Dave Blackhurst and Allan Anderson were especially generous, and we also received sizable donations from Jerry Pitstick and Ravi Nath. Other members, however, were also free with open wallets and checkbooks, and we can now report that the debt has been completely retired. We are loaning the tables to SUP on an as-needed basis, since we are not paying rent for the storage space for either the tables or the exhibit frames.

We recently received a sizable donation of stamps, books, albums and other philatelic material from long-time member Ewald Kuefner, for which we are very grateful. I have asked people to go through this material and provide an assessment of its approximate value, so we can then place it up for auction. We also have Treasure Hunt material which we also want to make available for purchase.

Finally, I have asked vice-president John Alleman if he might be willing to sort through boxes of source material—notes, journals, newsletters, etc.—and take on the task of writing a history of the Society. John has had experience in doing just this sort of thing, and he has agreed to move ahead with this. There is a lot of material available to examine, not all of it in one place, so John certainly has his work cut out for him.

NEWS FROM THE CLUB **NO CLUB MEETING ON JULY 4**

Since the first Thursday of July falls on July 4th, we will not be having a meeting on that day. We'll see you instead on the following meeting day, July 18th, and hope that you had a terrific Fourth of July.

Condition, Condition, Condition Grade, Grade, Grade

In real estate the three key factors a buyer should watch out for in choosing a house are said to be Location, Location, Location. With stamps there are six key factors: Condition, Condition, Condition and Grade, Grade, Grade. *Grade* means centering and (for used stamps) cancellation.

According to the *Scott Standard Postage Stamp Catalogue*: “*Condition* refers to factors other than grade that affect a stamp's desirability. Factors that can increase the value of a stamp include exceptionally wide margins, particularly fresh color, the presence of *selvage*, and plate or die varieties. Unusual cancels on used stamps (particularly those of the 19th century) can greatly enhance their value as well.”

Factors that decrease the value of a stamp are often faults resulting from negligence in caring for a stamp. See Page 4 for descriptions of conditions that detract from a stamp's value.

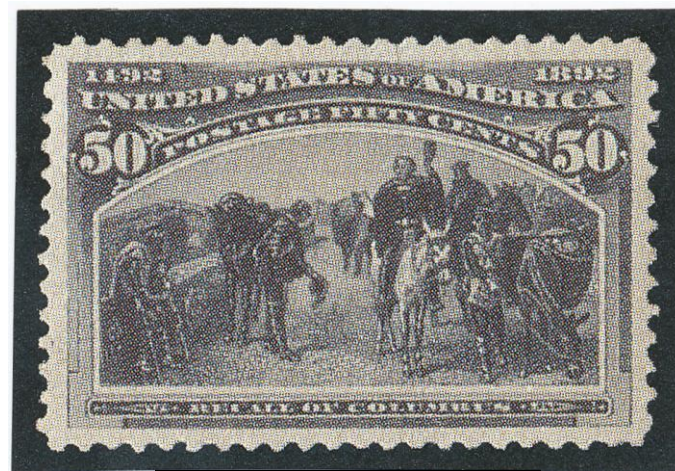
A long-time stamp collector recently asked me to look at his collection and give an opinion of its value. He was disappointed when I had to tell him a few stamps that had catalog values of between \$50 and \$500 were not worth nearly that much because of defects and poor centering. I was surprised when this not-so-well-informed man said “Nobody ever told me centering makes a difference.”

Grade, Grade, Grade (Centering, Centering Centering)

How much difference does centering make? Take a look at these two stamps. Both are Scott #240, the 50-cent value from the 1893 Columbian Exposition Issue.



Stamp A



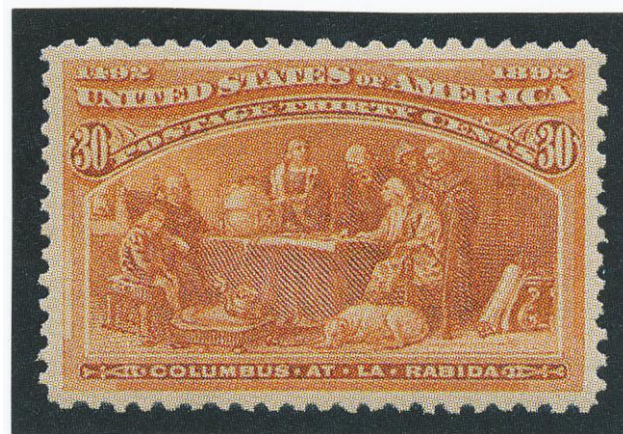
Stamp B

The difference in centering between Stamp A and Stamp B is a miniscule fraction of an inch. The difference in value (if both stamps are mint never hinged) is thousands of dollars.

Stamp A has “very fine” (VF) centering which, according to the Scott Catalogue is a stamp that “may be off center on one side, but the design will be well clear of the edge. The stamp will present a nice, balanced appearance.”

Stamp B has “extremely fine” centering. An “extremely fine” (EF) stamp is described as one that is “very well centered between margins that are normal or slightly larger than normal”. But it isn’t perfect. An EF stamp will carry a grade of 90, whereas a VF stamp is graded 80.

Scott values the VF stamp, Stamp A, at \$1,500 for mint never hinged. The XF stamp, Stamp B, is valued at \$3,500.



Scott #239, shown above, is graded 95 as “extremely fine - superb” (XF-S). According to Scott: “Close examination by unaided normal eyesight will reveal that the stamp is not perfectly centered.”



This stamp, Scott #231, is rated 98 -- “superb”; that is “essentially perfect centering”. Scott values this “superb” stamp at 36 times the value of a “very fine” #231 : \$1,350 for “superb”; \$37.50 for “very fine”.

Scott defines a “fine” stamp as one that is “quite off center, with the perforations on one or two sides very close to the design, but not quite touching it. There is white space between the perforations and the design that is minimal but evident to the unaided eye.”

The stamps shown below, #244 and #245, are both classified as “fine” (F) or grade 70. They both meet the above definition even though the design of the \$5 stamp is closer to the perforation than is that of the \$4 stamp.



Scott values a “fine” mint - never hinged (MNH) \$4 Columbian at \$2,600. The same stamp graded 95, XF-S, is valued at \$52,500. A “fine” \$5 Columbian MNH has a catalogue value of \$4,000; the XF-S value is \$85,000. Scott does not give a value for a “superb” MNH #244 or a #245. A hinged #244, XF-S, MNH, is valued at \$6,500. A hinged #245, XF-S, MNH, is valued at \$7,250. The hinge mark reduces the value of #244 by \$46,000; for #245 the cost of a hinge mark is \$77,750.

A “very good” or “average” stamp (grade 50) has perforations that slightly cut into the design on one or two sides. The stamp value of a “very good” (VG) stamp may be less than that of a “fine” stamp by as much as 50% or more. The stamp shown below, Scott #281, will likely meet the description of “very good”. The Scott Specialized Catalogue does not give values for stamps falling short of “very good”.



Condition Factors that Reduce the Value of a Stamp

- ✓ missing pieces
- ✓ torn
- ✓ pin holes or other holes
- ✓ thin spots
- ✓ surface scuffs
- ✓ creases
- ✓ short or missing perforations
- ✓ clipped perforations
- ✓ toning
- ✓ soiling
- ✓ stains
- ✓ oxidation or other color changelings
- ✓ reperforations
- ✓ other man-made changes such as chemical removal or lightening of a cancellation
- ✓ loss of original gum
- ✓ regumming
- ✓ hinge remnant or other foreign object adhering to the gum
- ✓ natural inclusions
- ✓ straight edges
- ✓ markings or notations applied by collectors or dealers