



P. O. Box 691, West Jordan, UT 84084

Winter 2022

Club Meeting Location

SONS OF UTAH PIONEERS

3301 E LOUISE ST (2920 S.)

First and third Thursday of each month

7:00 pm until 8:45 pm

Club Officers

President: Steve Baldridge

Vice-President: Craig Edwards

Secretary/Treasurer: Linda Snyder

Board Members: Vladimir Makarov

Steve McLaughlin, Howard Reed and

Jerry Pitstick

Newsletter Editor: Ewald Kuefner

Next Stamp Show

Sons of Utah Pioneers Building

3301 E Louise St. (2920 So.)

Date: February 11 & 12, 2022

Friday 10 am to 6 pm

Saturday 10 am to 4 pm



The President's Corner

Steve Baldridge

Greetings Members!

Welcome to a new year of the Utah Philatelic Society! We start the year with the hope that things will be an improvement from the last two years, when we had to postpone club meetings and some stamp shows due to the COVID-19 pandemic. We cancelled our first club meeting in January but held the second meeting with great caution.

It is time to recognize the leadership of the previous administration. President Joe Ferguson and Vice President Dave Blackhurst had the unenviable task of making difficult decisions regarding our meetings but were instrumental in keeping the club and show operating, when possible. Much of the work was achieved by our ever-diligent secretary, Linda Snyder, who kept us current with emails announcing what news there was to share. She offered the club's financial report (for 2020 and 2021) at our last meeting and provided a brief description of what she does to keep our records up-to-date. THANK YOU, LINDA!

Because of cancellation of many club meetings in 2020, we were unable to handle elections at year's end and the executive committee's term was extended by a year. As a result, our 2021 (Continued next page)

INSIDE THIS ISSUE

- | | |
|----------|---|
| 1 | The President's Corner – Steve Baldridge |
| 2 | Dr. Chien-Shiung Wu, The first Lady of Physics
Little known history. New Flag Stamp 2022 |
| 3 | You probably don't know who Howard Paine is.
What does Mr. Paine have to do with ELVIS? |
| 4 | Interesting Postage Stamps
Howard Paine and Cloudscape Postage Stamps |

The Presidents Message continued....

election included the executive committee, to be elected for a two-year-term, and the club's board, elected for a one-year term which will conclude at the end of 2022.

This procedure will allow the executive committee's and board's elections to return to a staggered schedule of every other year, each for a two-year term. The current board membership is listed in this issue.

Finally, we are also posting the schedule for the stamp shows for the year. It should be noted that the May show will also include members' exhibits, which will be voted on by those in attendance, with prizes awarded.

If you have an idea for an exhibit, now is the time to start preparing it because we hope the competition will be vigorous and informative.

For future planning we have the following dates set aside for Stamp Shows for the year of 2022:

February 11-12, 2022

May 20-21, 2022

October 7-8, 2022

Long may it wave!



2022 New Forever Stamp again featuring the American Flag. Postage going up to \$.58 this year.

Dr. Chien-Shiung Wu, The First Lady of Physics

Chien-Shiung Wu was a pioneer and pivotal figure in the history of physics. An immigrant to the United States from China, she did important work for the **Manhattan Project** and in experimental physics. Her crucial contribution to particle physics was however, ignored by the Nobel Prize committee when it awarded the 1957 Nobel Prize in Physics. She was born May 31, 1912. Her father believed girls should receive an education. She graduated with a degree in physics from the National Central University in Nanking, China. Her mentor, Dr. Jing-Wei Gu encouraged her to continue her education in the United States.



"Chien-Shiung Wu Nuclear Physicist" Sheet of 20 U.S. Postage Stamps | Face Value Forever 1 oz Rate | 2021 | Scott 5557 | America, Science

In 1942, she married Luke Chia-Liu Yuan, who she had met during her studies at Berkeley, Ca. They had one son in 1947. Following in his parents' footsteps, he also became a nuclear scientist. In 1954, Chien-Shiung became a US Citizen. After WWII she wanted to return to China to visit her family, but her father told her not to return to Communist China. She has many accomplishments and honors for her work and died in 1997. #

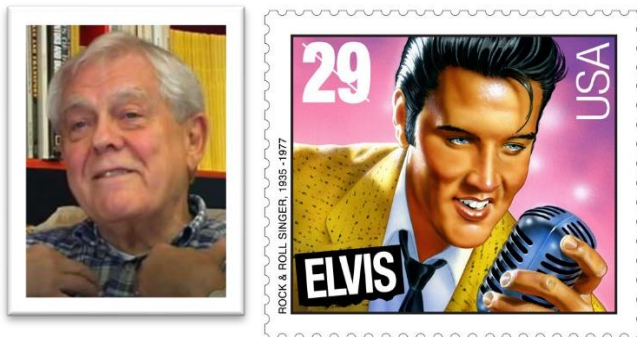
Howard E. Paine, Stamp Collector and More

By Bart Barnes, The Washington Post

You probably don't know who Howard Paine was, but you've seen his graphic artistry hundreds, probably thousands of times.

You've seen it if you've ever licked a stamp, mailed a letter, or thumbed the pages of National Geographic magazine. For more than 30 years, Mr. Paine was a stamp design coordinator of the Postal Service. For more than 30 years, he also was a graphic artist at the National Geographic Society retiring as art director.

At the Postal Service, Mr. Paine helped bring out the 29-cent Elvis Presley stamp in 1993.



After 21 years, the stamp remains the leader in commemorative stamps with 500 sold. Mr. Paine also helped create the Ronald Reagan stamp, as well as stamps commemorating the planets, gospel singers, movie stars, and comedians. He had a role in the design of 400 stamps in all, according to the retired manager of stamp development at the US Postal Service, Terry McCaffrey.

Mr. Paine, early on once declared that he wanted to "do some adventurous things" with stamps. He was the idea man and the persuasive force behind a series of **cloudscape stamps** that were issued by a skeptical Postal Service. Word of the upcoming series reach the nation's corps of radio and television weather forecasters. They talked it up in their broadcasts, and the series sold surprisingly well, said McCaffrey, the retired postal official.

(Continued on page 4, column 1)

Holiday Evergreens (Forever) 2010

On October 21, 2010, in New York, New York, at the Mega Stamp Show, the Postal Service TM issued a 44-cent, Holiday Evergreens (Forever) special stamp in four designs in a pressure-sensitive adhesive (PSA) booklet of 20 stamps (Item 679700) and an automated teller machine (ATM) sheetlet of 18 stamps (Item 575000). Designed by **Howard E. Paine**, Delaplane, Virginia. The stamp went on sale nationwide October 21, 2010. Featuring closeup views of the foliage and cones of four different conifers: ponderosa pine, eastern red cedar, blue spruce, and balsam fir. The artist, the late Ned Seidler, was a gifted painter of nature subjects. He frequently used cuttings from plants and trees in his own yard as reference.



Howard E. Paine, Stamp Collector and More

(Continued from page 2 column 1)

Howard Erwin Paine was born May 1, 1929, in Springfield, Massachusetts. He began stamp collecting in childhood. He was a 1950 philosophy graduate of American International College in Springfield.

He had no formal design training, but he edited his high school and college yearbooks. He worked in a family electrical business until 1957 and had a short-lived job writing and designing ads for a bank and advertising firm. He also read "Advertising Age" and other periodicals to keep atop trends in design.

With the US Postal Service, where he worked from 1981 to 2012, he was best known for his contributions to the Elvis stamp. He supervised several artists in arriving at the final design, which was determined after the public voted overwhelmingly for an image of the "young Elvis" instead of the "old Elvis."

It was the first in a series of commemorative stamps honoring American music and musicians. Of the 500 million worth of the commemorative stamps have not been used and are believed to be in the hands of collectors.

Mr. Paine was known for his bow ties and a soft-spoken manner. At staff meetings, he sometimes appeared to be doodling, former Postal Service staffer McCaffrey said. Then he would stand up, walk over to whomever was leading the meeting and hand him a napkin or scrap of paper with a stamp design drawn on it. frequently it was just what was needed.

Howard Paine died in 2014.#



Cloudscapes Postage Stamps, (37-cent) 2004



As adults, most of us don't take the time to see the beauty that graces our skies every day. No matter where you reside, cloud formations provide a wonderful show of nature's true beauty. On October 4, 2004, the United States Postal Service issued a series of commemorative postage stamps called "Cloudscapes", Each 37-cent postage stamp provided information on the back about each type of cloud. There are 15 different stamps in the set. #